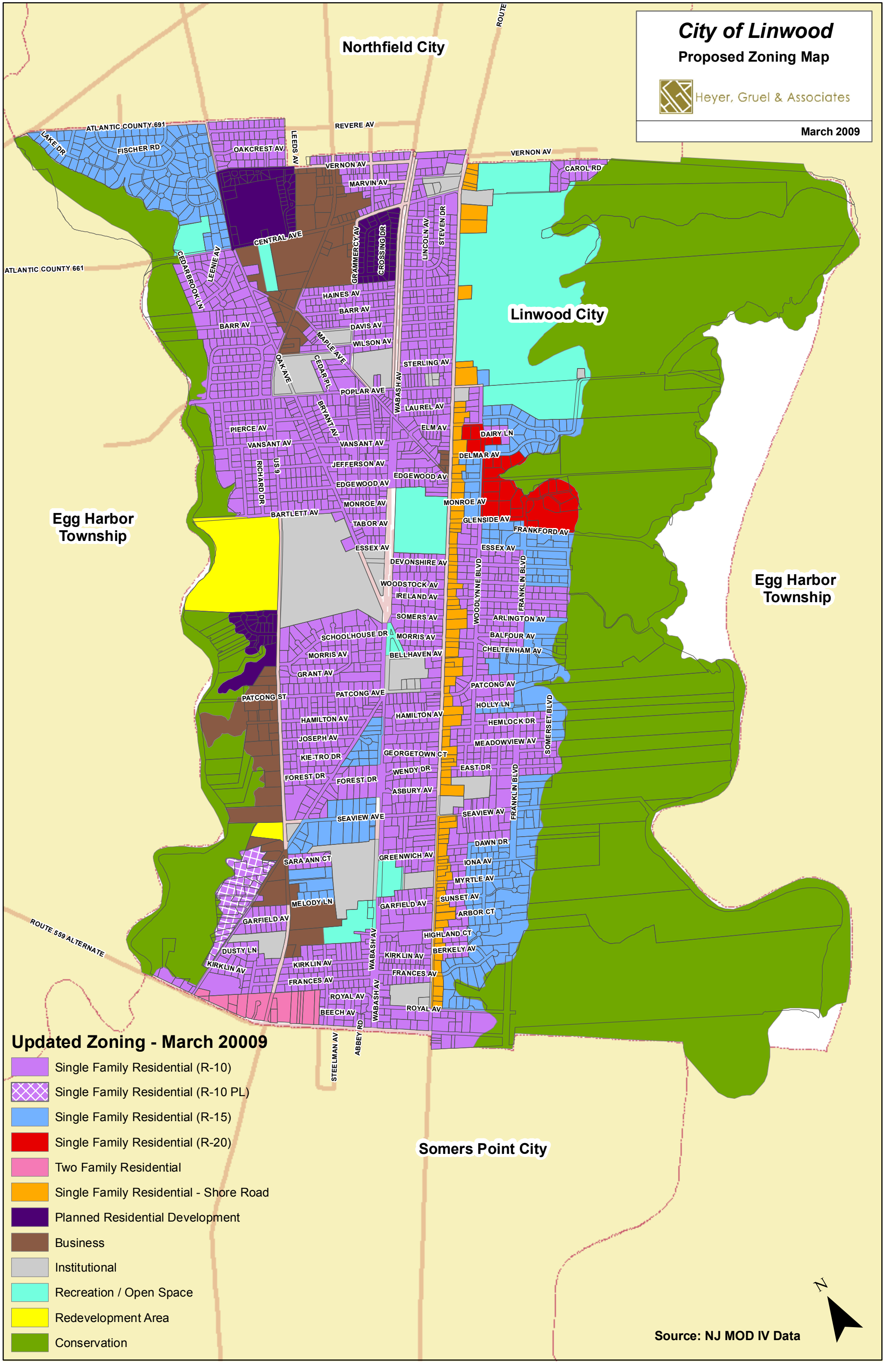


City of Linwood Proposed Zoning Map



Heyer, Gruel & Associates

March 2009



Updated Zoning - March 2009

- Single Family Residential (R-10)
- Single Family Residential (R-10 PL)
- Single Family Residential (R-15)
- Single Family Residential (R-20)
- Two Family Residential
- Single Family Residential - Shore Road
- Planned Residential Development
- Business
- Institutional
- Recreation / Open Space
- Redevelopment Area
- Conservation



Source: NJ MOD IV Data